

SUPPORT COORDINATION

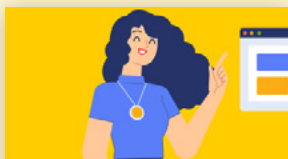
What is SUPPORT COORDINATION?

Your Support Coordinator from Auscare Support will assist you with implementing your goals by understanding your plan and connecting you with the right services to bring it to life. Our aim is to help build your confidence and independence, beginning with where you are at today.

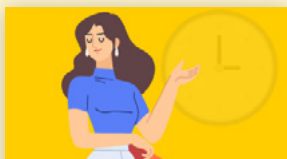
The great thing About Auscare Support is that we are:



Available to speak in person.



Well versed in the supports and organisations local to you.



Work flexibly to accommodate your situation.

Choose Auscare Support to help you save time, reduce stress and expand your choice and control.




Here are a few key things to think through before you speak with an Auscare Support Support Coordinator.

Do I have funding for Support Coordination in MY PLAN?

Take a few minutes to look through the hard copy of your plan. Do you have the right funding in your plan? You will need:

Capacity Building Support Coordination.

If you're changing providers part way through your plan, do you still have funds left? Be sure to check:

-  **The myplace portal.**
-  **How much funding you have left for Support Coordination.**
-  **Any funds released back to the myplace portal after you have ended your agreement with your previous service provider.**

How can I switch to AUSCARE SUPPORT?



Find the Service Agreement you have with your current Support Coordinator.



Inform them in writing that you would like to cease your service agreement and release your remaining budget.



Double check the notice period.



Get in contact with Auscare Support.

Get started with Auscare SUPPORT TODAY

AUSCARE 

1800 940 515

auscaresupport.com.au

info@auscaresupport.com.au

What type of support CAN I EXPECT?

Before your first consultation with your Auscare Support Support Coordinator, take some time to think through what you'd like achieve when working with us. Here's a simple checklist to work through.

What funding categories are in your plan?

.....

What are the goals in your plan?

.....

What supports do you need to meet those?

.....

What are the activities you'd like to do to meet your goals?

.....

What are your current supports and how are they going?

.....

Do you need more services or less?

.....

.....

Important facts about SUPPORT COORDINATION

- **If you're using a Support Coordinator, you don't need to sacrifice any money from your other supports. Support Coordination is funded over and above funding for your regular providers.**
- Support Coordination can be Agency Managed, Plan Managed or Self Managed.
- **When you're Agency Managed, you can still receive assistance from our Support Coordinators.**
 - **Since we're a registered provider, and you can only use registered providers when you are NDIA-managed, you can work with us!**
- Plan Management and Support Coordination complement each other. Plan Management helps you with the financial side of your NDIS budget, whereas Support Coordination helps you bring your plan to life and build your capacity.
 - You can be Plan Managed and still choose Support Coordination to fill the gaps that Plan Management doesn't cover.
 - You can be Plan Managed by another business and choose Support Coordination from Auscare Support.
- **You can Self-Manage your NDIS budget, and still choose Support Coordination for part of it.**
- You can use a combination of management types.
 - You can combine Plan Management, Self Management, Support Coordination and Agency Management in the way that best meets your needs to make your plan work for you.